

MPPT Solar charge controller

New eTracer series



New eTracer is an industrial grade product with advanced Maximum Power Point Tracking (MPPT) algorithm. It can deliver the maximum available power for charging batteries and charge a lower nominal voltage battery from a higher nominal voltage array. And can be applied in the off-grid PV systems up to 3KW. The die-cast aluminum design ensures excellent heat dispersion.



Models:

ET4415BND 45A, 12V/24V/36V/48V auto work

ET6415BND 60A, 12V/24V/36V/48V auto work

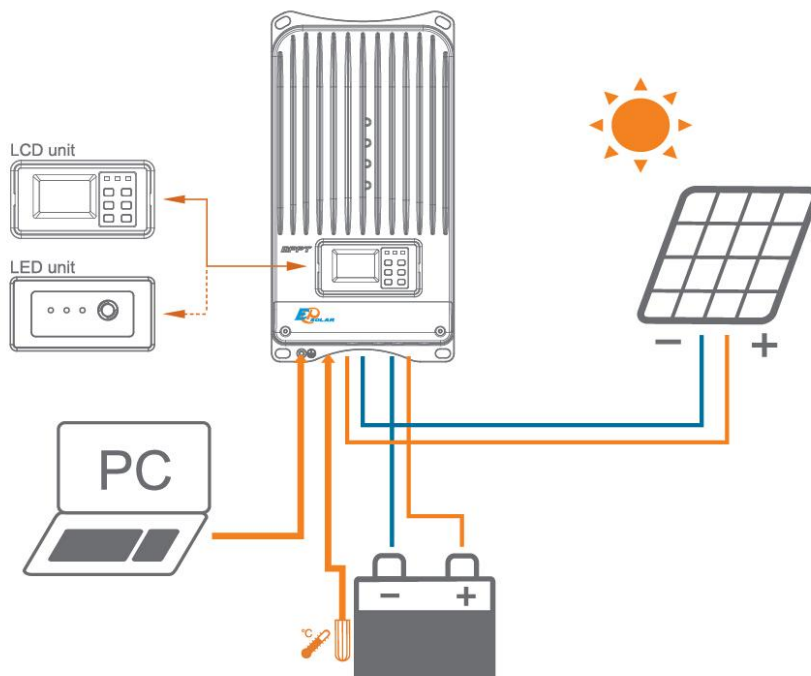
Features:

- ◆ Advanced MPPT algorithm with the max. tracking efficiency of 99%.
- ◆ Multi-phase synchronous rectification technology realizing peak conversion efficiency 98%
- ◆ Dual-core(ARM CPU+DSP) control architecture improves the system response speed and optimizes the performance of the system
- ◆ Multiphase control technology, optimizes charging current smoothness, reduces ripple and improves the system efficiency

- ◆ 128*64 dot-matrix LCD intuitively displays data and state, 6 buttons combinations for easy operation
- ◆ Four battery type options: Sealed, Gel, Flooded and User-defined
- ◆ Energy statistics recording, it is convenient for users to view charging and discharging energy of each day, month, year and total value.
- ◆ Diversified load control mode
- ◆ Programmable battery management parameters
- ◆ Built-in running data and event logging, max. 15 months
- ◆ Extensive communication capabilities (RS232,RS485 with Modbus protocol, CAN Bus extendable)
- ◆ PC software available for real time monitoring and parameter setting
- ◆ Field upgradable firmware

Electronic protections:

- ◆ PV short circuit protection
- ◆ PV over current alarm protection
- ◆ Battery overcharge protection
- ◆ Battery reverse polarity protection
- ◆ PV overvoltage alarm protection
- ◆ PV reverse polarity protection
- ◆ Battery over discharge protection
- ◆ Overheating protection





Accessories :

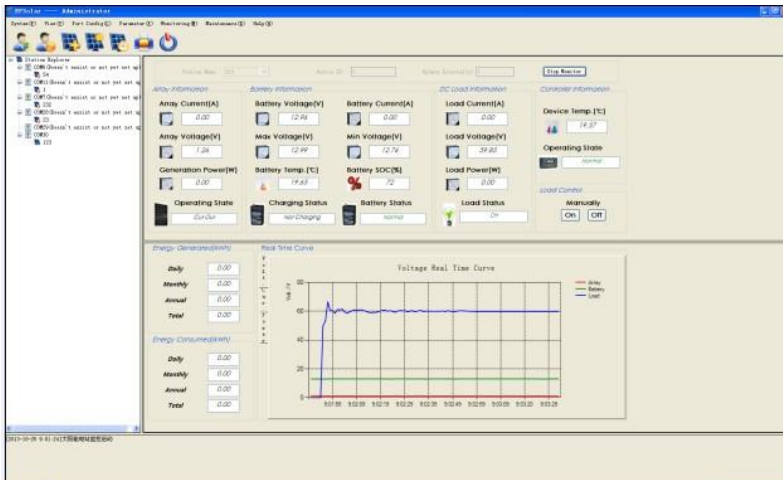


Remote temperature sensor
RTS300R10K5.08A



PC communication cable
CC-USB-RS485-150U-3.81

PC software:



Display interface:



Technical specifications

| Model | ET4415BND | ET6415BND |
|--------------------------------|--|-------------|
| Nominal system voltage | 12/24/36/48V auto work | |
| Rated battery current | 45A | 60A |
| Max. PV open circuit voltage | 150V | |
| Voltage range | 8~72V | |
| Max. PV input power | 600W (12V) | 800W (12V) |
| | 1200W (24V) | 1600W (24V) |
| | 1800W (36V) | 2400W (36V) |
| | 2400W (48V) | 3200W (48V) |
| Self-consumption | 1.4~2.2W | |
| Equalize charging voltage | Sealed: 14.6V, Flooded: 14.8V, User-defined: 9~17V | |
| Boost charging voltage | Gel: 14.2V, Sealed: 14.4V, Flooded: 14.6V, User-defined: 9~17V | |
| Float charging voltage | Gel /Sealed /Flooded: 13.8V, User-defined: 9~17V | |
| Low voltage reconnect voltage | Gel /Sealed /Flooded: 12.6V, User-defined: 9~17V | |
| Low voltage disconnect voltage | Gel /Sealed /Flooded: 11.1V, User-defined: 9~17V | |
| Grounding | Common negative | |

* Technical data for 12V system at 25°C

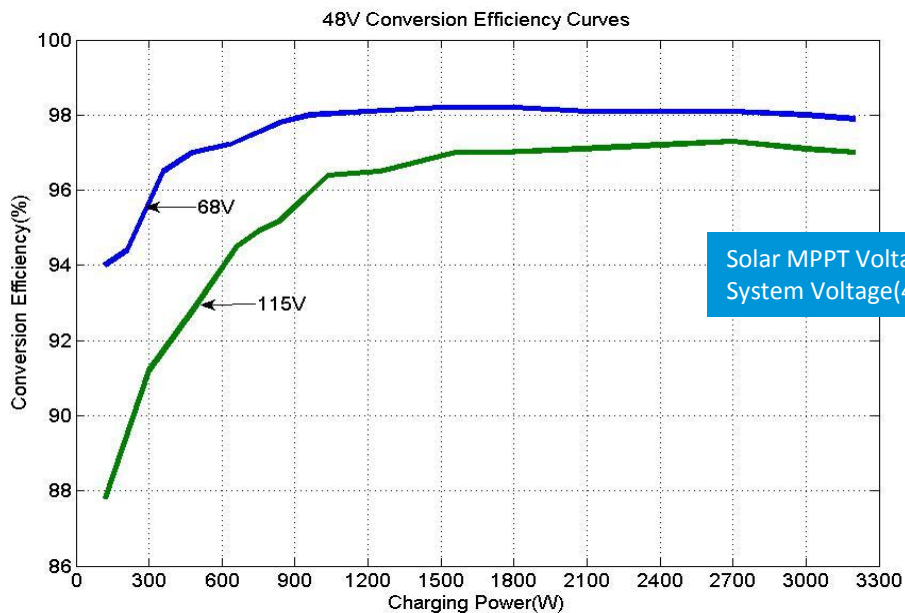


| Mechanical | ET4415BND | ET6415BND |
|-------------------|-------------------|-------------------|
| Overall dimension | 398.6x208x107mm | 449x208x107mm |
| Terminal | 35mm ² | 35mm ² |
| Net Weight | 4.3kg | 5.5kg |

| Environmental | |
|---------------------|---------------|
| LCD temp. range | -20°C ~ +70°C |
| Ambient temp. range | -25°C ~ +55°C |
| Storage temp. range | -30°C ~ +85°C |
| Humidity range | ≤95% N.C. |
| Enclosure | IP20 |

Conversion efficiency curves:

Illumination Intensity: 1000W/m² Temperature: 25°C Test model: ET6415BND



Solar MPPT Voltage(68V,115V) / System Voltage(48V)



BEIJING EPSOLAR TECHNOLOGY CO.,LTD.
Add: BLDG #18, CO.PARK ,NO.8 HEYING ROAD,CHANGPING DISTRICT, BEIJING, CHINA
Tel: 010-82894962 / 82894112
Fax: 010-82894882
E-mail: info@epsolarpv.com